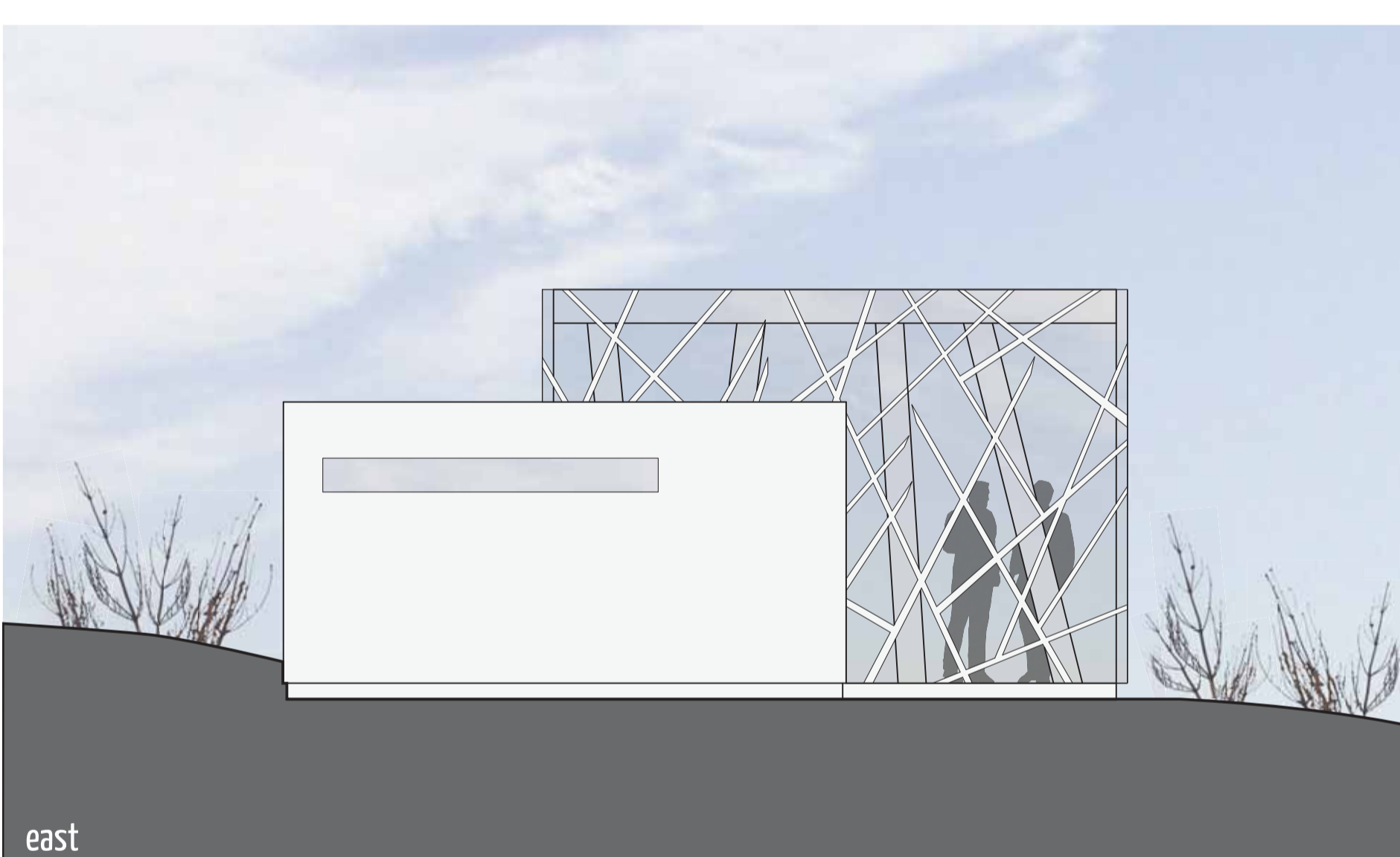
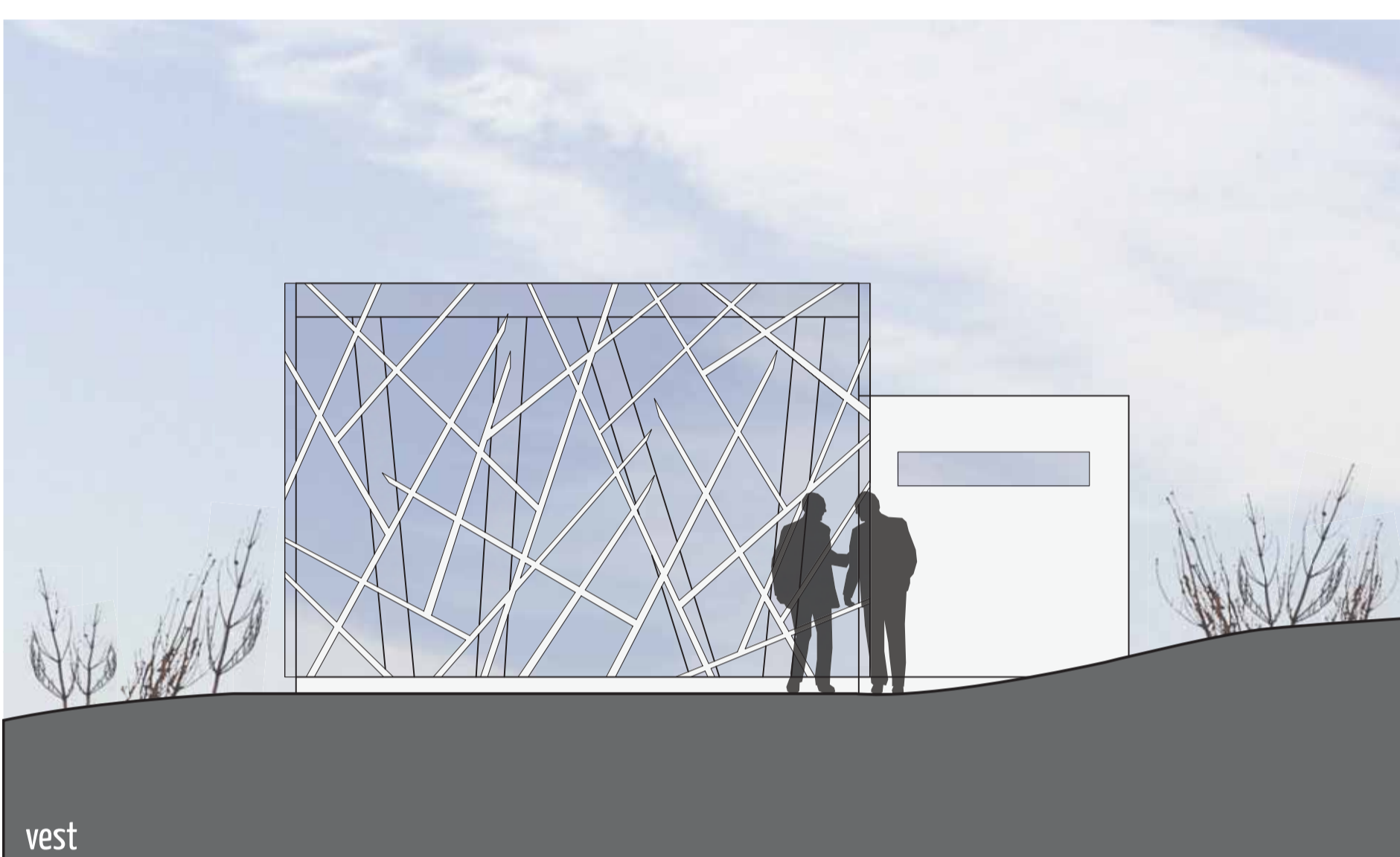
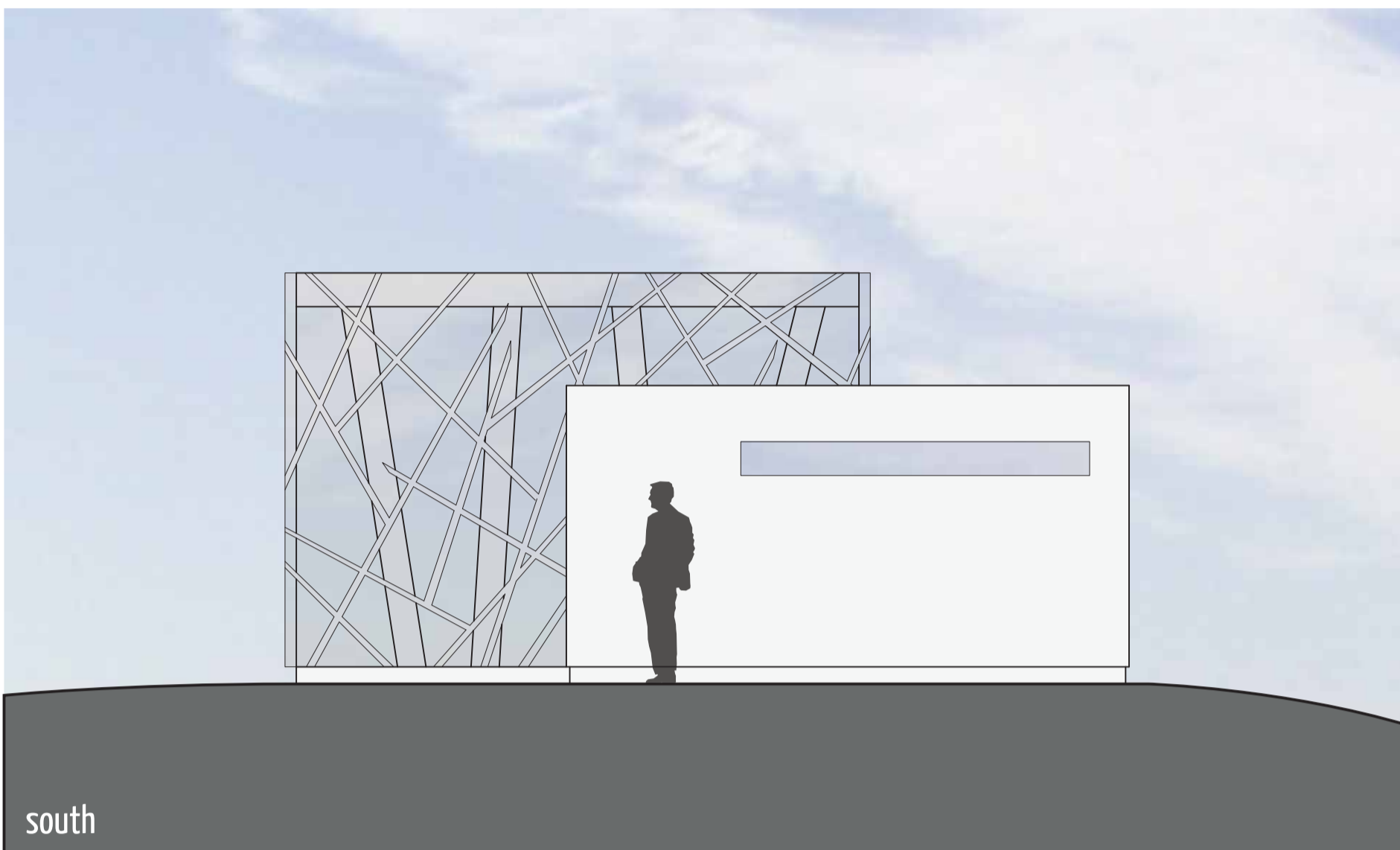
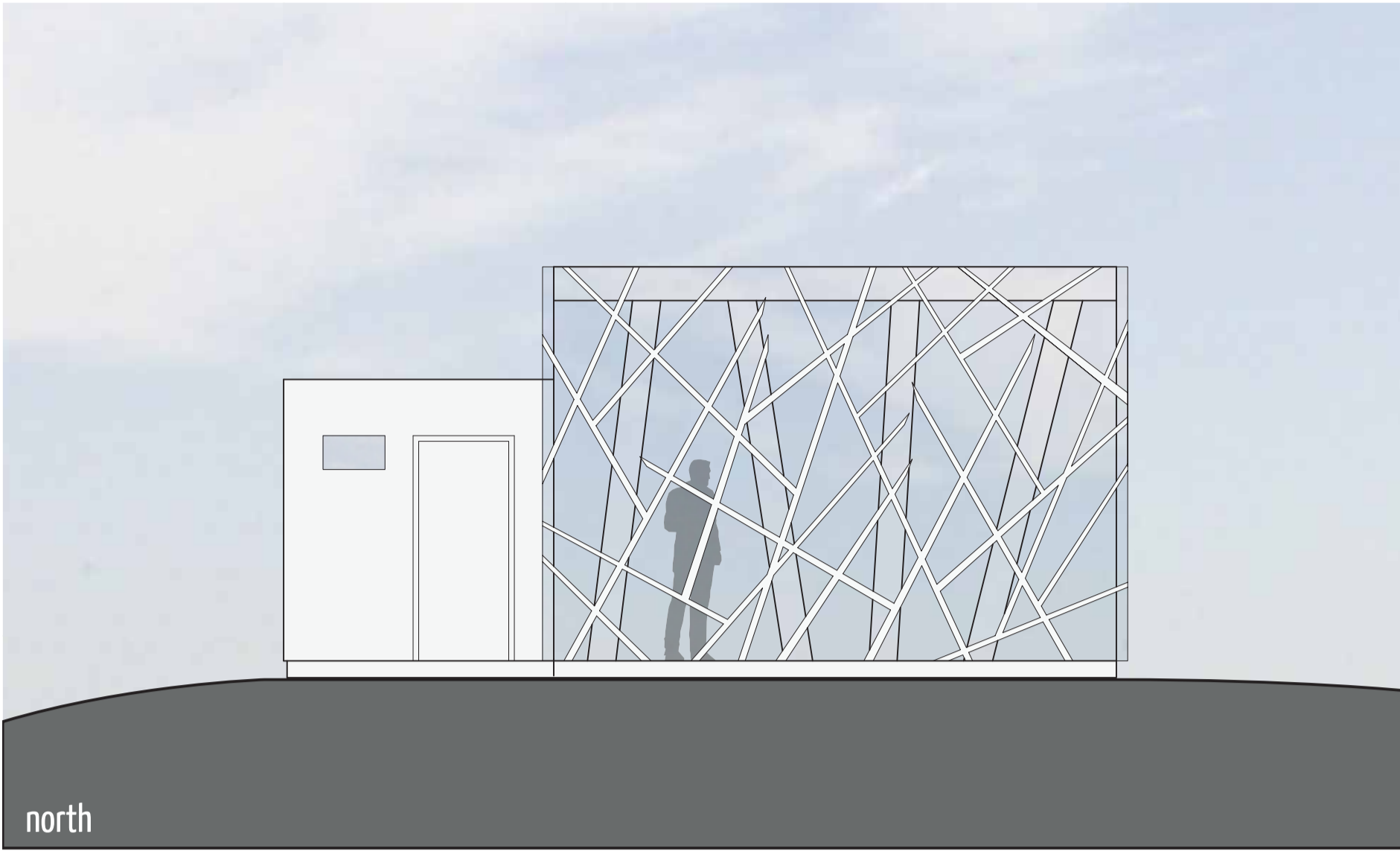


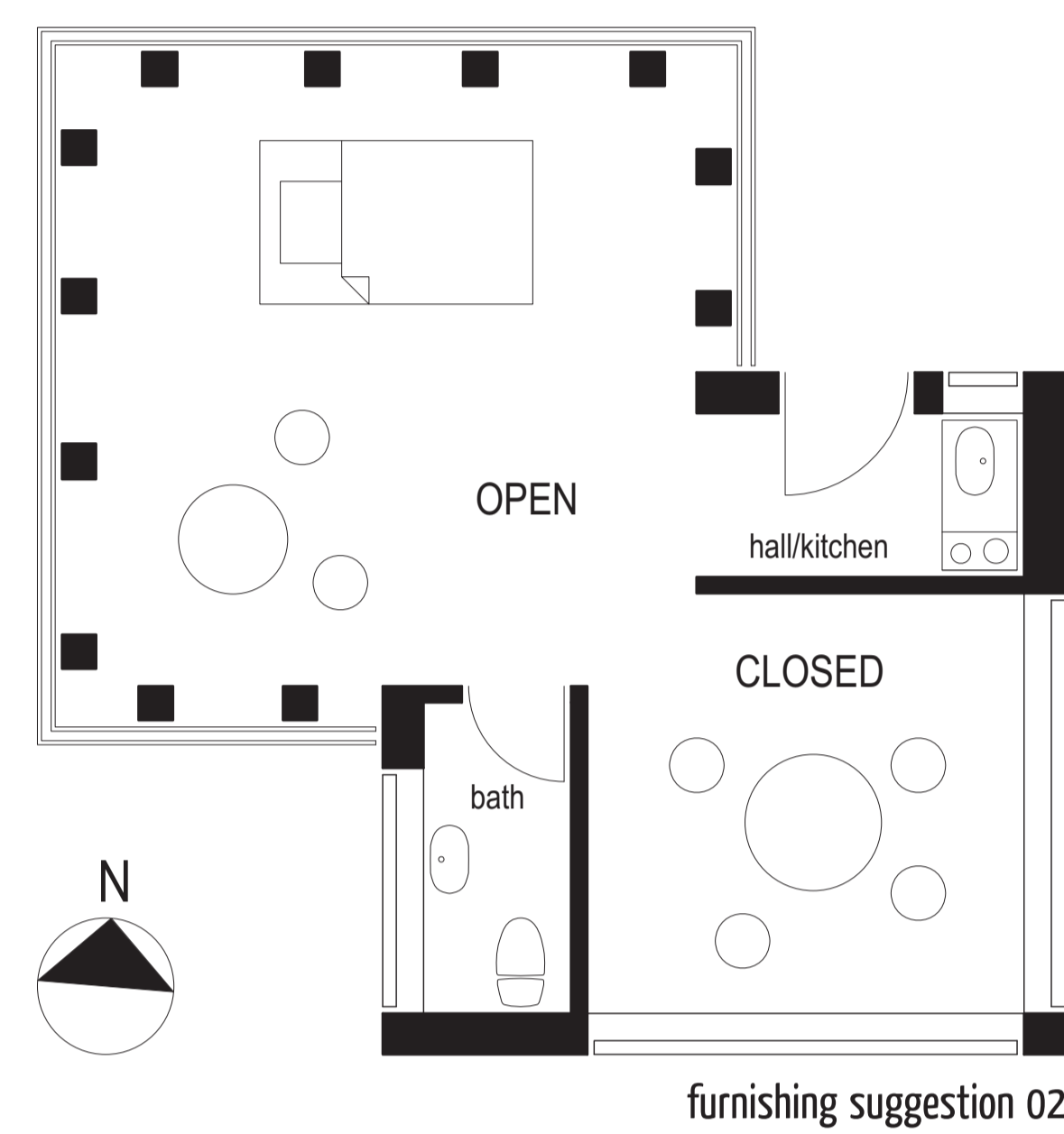
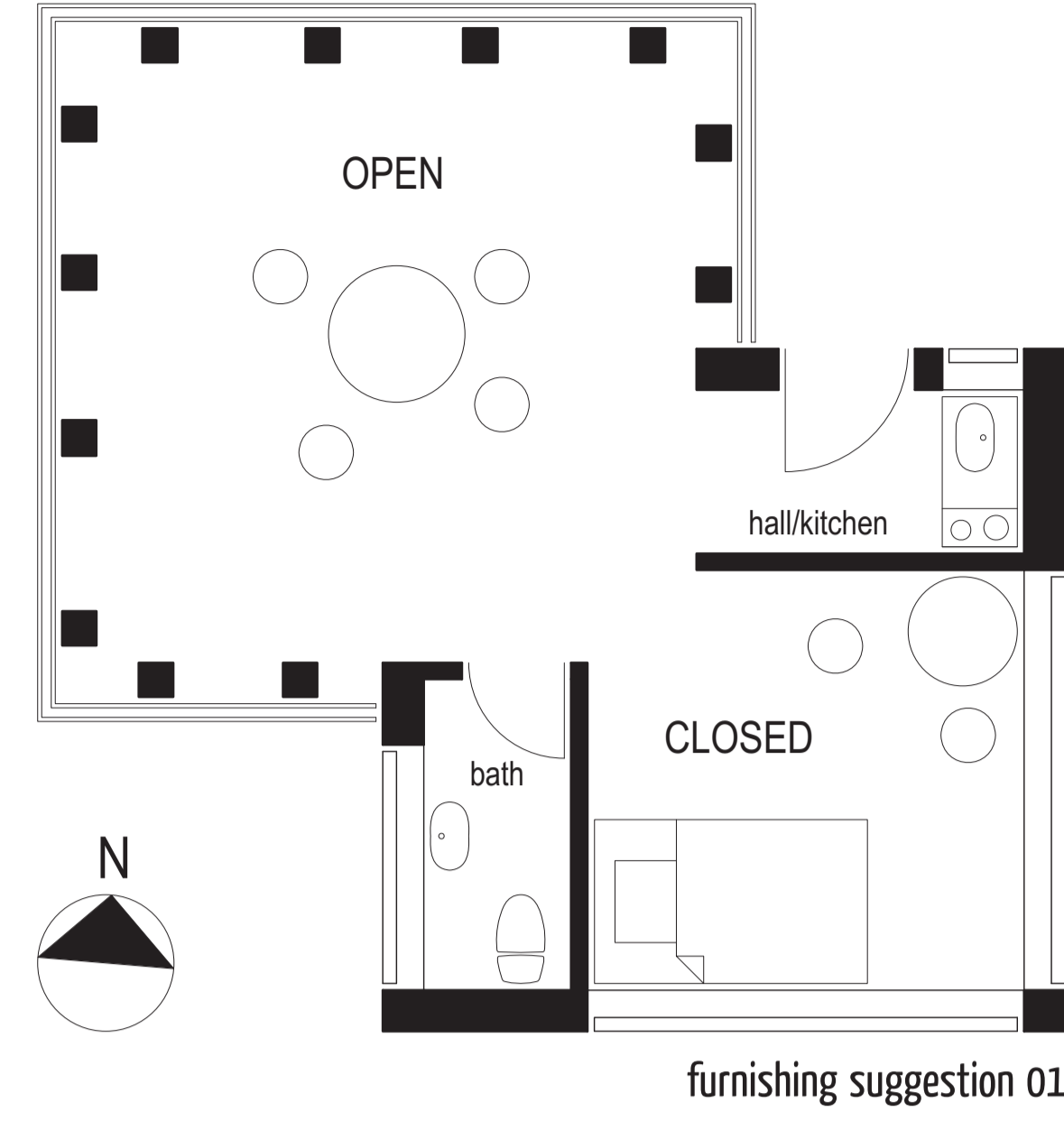
a hide amid the plantation | dwelling for a writer

Charlotte Kjeldbjerg Jensen | 8th semester minor project | 2008 | Aalborg University | Institute of architecture

elevations 1:50



plan 1:50



siteplans



In the north western part of Jutland, more precisely between the lighthouse of Rubjerg Knude and Mårup Church, a migrating dune is consuming the land burying everything in sand that it comes across on its way and later makes it fall into the sea.

In this area the dwelling for the writer is situated. In the middle of the line of branches put up to protect the dune from moving too fast, the building merges into the dune protection by adopting the structure of the branches and applying it on the façade, though, in a more abstract way.

From here, there is a view over the dynamic landscape of the sea, the dunes, the land, and, far away, Mårup Church, which is almost on the edge of the cliff.

A writer is independent of specific views in order to do his job. However, he needs sources of inspiration as well as calm surroundings to make his work of art. Therefore, the building is divided into two parts containing respectively a large and open room and a smaller closed room.

This makes it possible for the writer to move his working place to which room that provides him the best conditions during the different stages of work. This means that nothing in the dwelling is set, except for the entrance, the kitchen, and the toilet.

When staying in the little room, the writer is enclosed by the massive concrete walls with only two stripes of windows under the ceiling to let the light in.

Another feeling is obtained when staying in the large room. As a contrast the walls are open to all sides and it has a high ceiling, which provides lots of light for the room. Furthermore there are views of the landscape to all sides. Another contrast is achieved by the complexity of the glass façades. Instead of being in a room with a calm and uniform surface, the writer is in an inspiring room with façades imitating the outdoor plantation and playing with the light and shadows. These façades are built up by two layers – the innermost layer is a part of the constructive structure, imitating the branches of the plants, while the outer layer only is a decorative element imitating the twigs.

From this room it is possible to follow the course of time as it moves on outside the window changing the seasons as well as the landscape as the dunes move. Also, the course of time is visible from the outside, as the building gets worn by the harsh weather conditions at the west coast. And as the sand moves with the wind, it will heap up along the building, which in the end will suffer the same fate as the dune protection and the rest of the landscape and finally be buried.



sections 1:50

